



Southwest Area Incident Management Team

TEAM 5 – Dave Gesser– INCIDENT COMMANDER

Containment increases and suppression repair work begins

Daily Update, Wednesday, June 26, 2024

Mescalero Apache Tribe Emergency Operations Center: 575-464-9214

Village of Ruidoso and Lincoln County Emergency Operations Center: 575-258-6900

Fire Information Phone: 575-323-8378 or 575-323-8258

Media Information Phone: 575-323-8053

Phone Line Hours: 8 am – 8 pm

Email: 2024.southfork@firenet.gov

Acres: South Fork – 17,569; Salt – 7,939

Location: South Fork – Ruidoso Area

Salt – 7 mile west of Mescalero, NM

Fuels: mixed conifer, grass, pine/juniper

Start Date: June 17, 2024

Personnel: 949

Containment: South Fork – 64%; Salt – 55%

Resources: The South Fork and Salt fires are currently staffed with 21 crews, 6 helicopters, 54 engines, 8 bulldozers, and 13 water tenders.

Highlights:

An interactive property map is now available for the Village of Ruidoso. An online map is available to assist residents in identifying the status of property access, including properties available for re-entry and those in the No Entry/Exclusion Zones. See “More Information” below for the map link.

Residents and visitors are encouraged to celebrate our Nation’s Birthday, July 4th, without fireworks. We are getting close to celebrating our Nation's Birthday, July 4th. The Mescalero Apache Reservation, Lincoln National Forest and municipal areas have areas that have not received significant rainfall, and fireworks could start new fires. Please celebrate without fireworks this year, so firefighters can complete their efforts to secure the perimeter of the South Fork and Salt fires.

Slow down. Motorists are reminded to slow down while traveling on the Mescalero Apache Reservation. There is still active fire, fire personnel, equipment and utility vehicles along US Highway 70. Help keep firefighters and crews safe by slowing down while traveling through the area.

Fire Activity: On Tuesday, as temperatures increased and fuels dried slightly, several smokes were observed by crews on the South Fork and Salt fires. This activity is the result of unburned and smoldering fuels igniting inside the fire area, including dead and downed trees/debris, snags, and stumps. Potential for these fuels to spread outside the current perimeter is minimal.

A lot of activity is still occurring across the fire area as crews work through structural assessments of buildings impacted by the fire, mop up and begin suppression repair. Cooperators, including utility providers and others are also traveling within the fire area. Area and neighborhood status and conditions are dynamic and will remain that way through the duration of the incident.

Weather: Temperatures will remain in the high 80s. Slow-moving scattered showers and thunderstorms will return in the afternoon, increasing the risk of flash floods and debris flows.

Smoke: Smoke production will remain light to moderate on Tuesday with the highest impacts during the early morning and late evening hours. Additional details are available at <https://outlooks.wildlandfiresmoke.net/outlook/430b2c05>.

Reentry: No evacuations are in place. However, designated "NO ENTRY/EXCLUSION ZONES" remain in place in some areas of the village. Visit <https://www.ruidoso-nm.gov/south-fork-fire> or contact the Village of Ruidoso and Lincoln County Emergency Operations Centers for more information.

Tribal members who have been displaced outside of the Mescalero Apache Reservation due to the fires are strongly encouraged to contact the Tribe's Emergency Operations Center (EOC) to help you and your families get back to the reservation. If you're stranded out of town at other evacuation sites, please call the EOC at 575-464-9214 for more details.

Closures: A South Fork Fire Emergency Closure Order was issued on June 20, 2024, for national forest lands within the Smokey Bear Ranger District. The identified areas, and roads and trails therein, are closed to public access to allow firefighting personnel to work and through the fire area safely. More information is available at www.fs.usda.gov/alerts/lincoln/alerts-notice/?aid=88199.

A Temporary Flight Restriction (TFR) is in place over the fire area. Public/commercial drone flights are also prohibited within this area. If you fly, we may have to ground our air resources. Visit <https://www.tfr.faa.gov> for more information.

More information:

Inciweb: <https://inciweb.wildfire.gov/incident-information/nmmea-south-fork-and-salt>

Facebook: <https://www.facebook.com/SWIMT5>

Smoke Outlook: <https://outlooks.wildlandfiresmoke.net/outlook/430b2c05>

Lincoln County Government: www.lincolncountynm.gov

Mescalero Apache Tribe: <https://mescaleroapachetribe.com>

Village of Ruidoso: www.ruidoso-nm.gov/south-fork-fire

Village of Ruidoso property status map:

<https://ruidoso.maps.arcgis.com/apps/instant/lookup/index.html?appid=e5a6b23bd2934ed192373e9ccbb4aee2>

Public Information

6/26/2024 Day
South Fork
NM-MEA-000382
17,569 acres at 6/24/2024 2358hr

Salt
NM-MEA-000385
7,939 acres at 6/24/2024 2358hr

Contained

Uncontained

Primary Highway

Secondary Highway

Tribal Lands

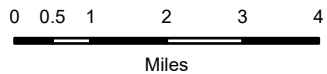
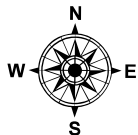
USFS Wilderness

Forest Service Land

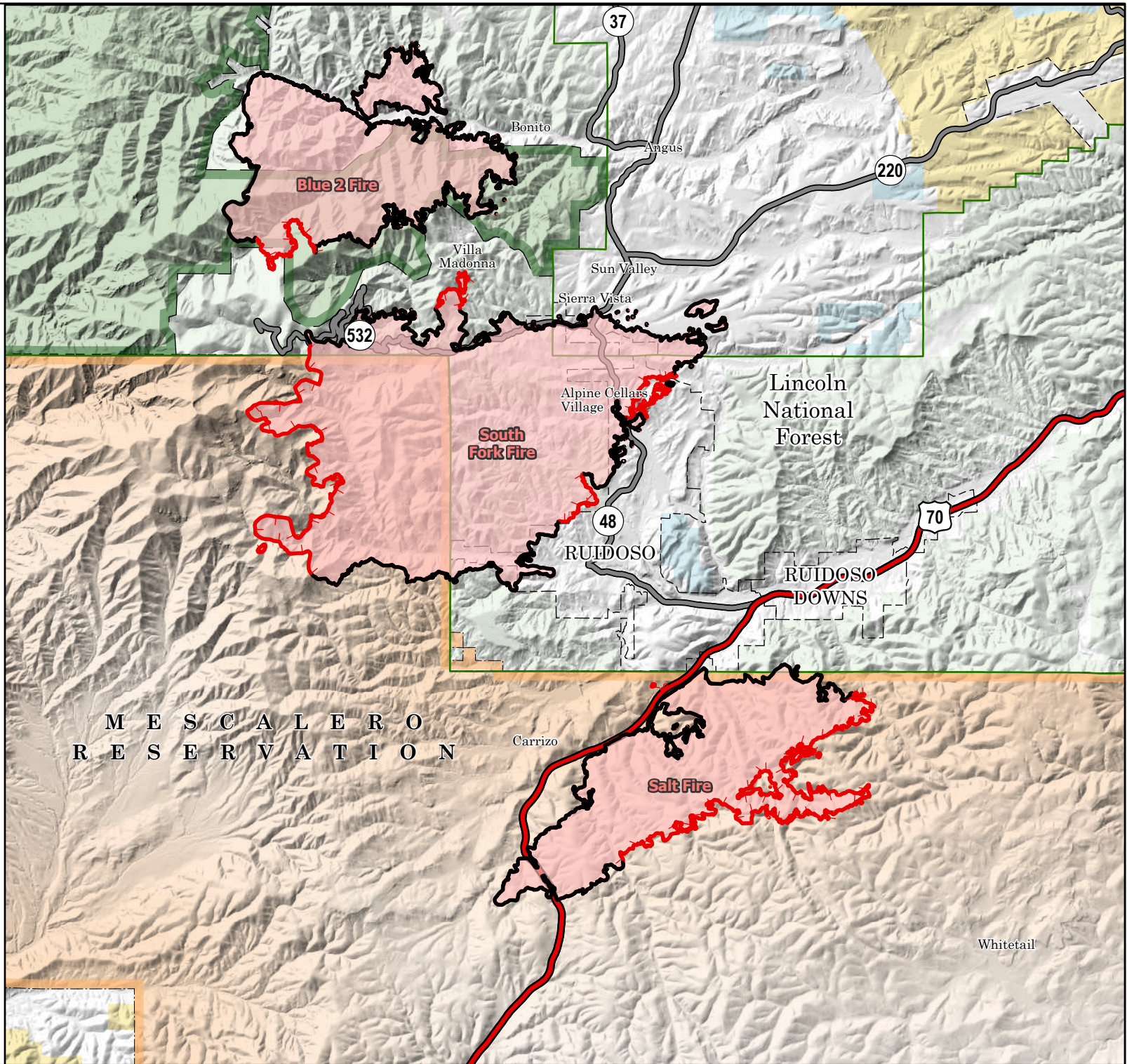
Bureau of Land Management Lands

State Lands

Wildfire Daily Fire Perimeter



1:160,000 | SW IMT 5 | 6/25/2024 2040
Acres from Mixed Methods
North American 1983 Datum





Smoke Outlook

South-Central New Mexico - South Fork and Salt Fires

6/26 - 6/27

Issued by [Wildland Fire Air Quality Response Program](#) on June 26, 2024 at 07:37 AM MDT

Fire

The South Fork Fire is 17,559 acres and 64% contained; The Salt Fire is 7,939 acres and 55% contained. Further information on each fire is available at inciweb.nwcg.gov. A flash flood watch is in effect from 11 AM today until 6 AM Thursday.

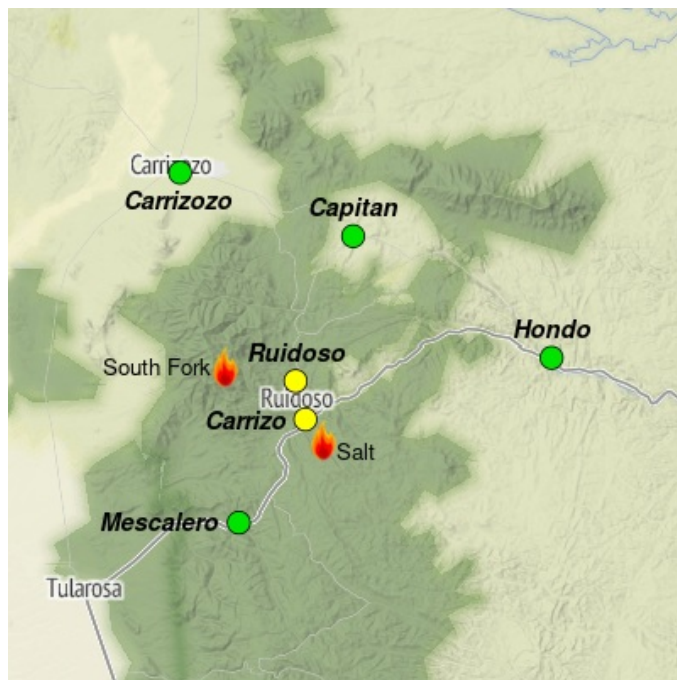
Smoke

Smoke will continue to have the biggest impact during the late overnight and morning hours for areas near the fires such as **Ruidoso, Carrizo, and Ruidoso Downs**. **Air quality may briefly be UNHEALTHY FOR SENSITIVE GROUPS at times during the morning**. Light smoke will continue to impact Capitan, Hondo, and nearby areas with brief MODERATE air quality conditions at times. Elsewhere, such as Carrizozo and Mescalero should see GOOD air quality with minimal smoke impacts.

All areas should see GOOD air quality during much of the afternoon and evening hours, especially if showers or storms are overhead. Showers or storms nearby though could create gusty and erratic winds which could push smoke in any direction causing brief air quality impacts to any location.

Smoke Safety

Smoke will continue to impact air quality, especially for those near the fires. Take precautions when smoke is present by limiting outdoor activities, staying hydrated, and/or wearing a mask (N95 or P100).



Daily AQI Forecast* for Wednesday

| Station | Yesterday hourly | Tue 6/25 | Forecast* | Wed 6/26 | Thu 6/27 |
|-----------|---------------------|-------------|---|-------------|-------------|
| | 6a noon 6p | | Comment for Today -- Wed, Jun 26 | | |
| Carrizo | | | Smoke continues during the overnight into morning with MODERATE AQI. | | |
| Capitan | | | Light smoke and MODERATE air quality at times, but GOOD overall. | | |
| Ruidoso | | | Smoke continues during the overnight into morning with MODERATE to USG AQI. | | |
| Carrizozo | No hourly data | | GOOD air quality expected with minimal to no smoke impacts. | | |
| Mescalero | No hourly data | | Air quality expected to remain GOOD with minimal smoke impacts. | | |
| Hondo | | | Air quality expected to remain GOOD with only light smoke impacts. | | |

Issued Jun 26, 2024 by Dan Byrd, Air Resource Advisor (dan.byrd@noaa.gov)

| Air Quality Index (AQI) | Actions to Protect Yourself |
|-------------------------|---|
| Good | None |
| Moderate | Unusually sensitive individuals should consider limiting prolonged or heavy exertion. |
| USG | People within Sensitive Groups* should reduce prolonged or heavy outdoor exertion. |
| Unhealthy | People within Sensitive Groups* should avoid all physical outdoor activity. |
| Very Unhealthy | Everyone should avoid prolonged or heavy exertion. |
| Hazardous | Everyone should avoid any outdoor activity. |

***Disclaimer:** This forecast is based on fine particulates only; ozone is not included. Forecasts may be wrong; use at own risk. Use caution as conditions can change quickly. See your health professional as needed. Smoke sensitive groups should take appropriate precautions.

Additional Links

[InciWeb South Fork & Salt Fire Information](https://inciweb.wildfire.gov/incident-information/nmmea-south-fork-and-salt) -- <https://inciweb.wildfire.gov/incident-information/nmmea-south-fork-and-salt>

[NM Fire Information](https://nmfireinfo.com/) -- <https://nmfireinfo.com/>

[NM Environmental Public Health Tracking](https://nmtracking.doh.nm.gov/environment/air/FireAndSmoke.html) -- <https://nmtracking.doh.nm.gov/environment/air/FireAndSmoke.html>

--



Issued by Interagency Wildland Fire Air Quality Response Program -- www.wildlandfiresmoke.net

South-Central New Mexico Updates -- <https://outlooks.wildlandfiresmoke.net/outlook/430b2c05>

*Smoke and Health Info -- www.airnow.gov/air-quality-and-health