



STATE OF NEW MEXICO  
**Michelle Lujan Grisham**, Governor  
**David R. Scrase, M.D.**, Secretary  
Kari Armijo, Deputy Cabinet Secretary  
Angela Medrano, Deputy Cabinet Secretary  
Nicole Comeaux, JD, MPH, Medicaid Director

## NEWS RELEASE

**Contact:** Jodi McGinnis Porter  
[jodi.mcginis-porter@state.nm.us](mailto:jodi.mcginis-porter@state.nm.us)

January 11, 2022

### **State publishes the 2022 Data Book Volume 3** *Provides national data that compares New Mexico to other states*

SANTA FE – The New Mexico Human Services Department announces the publication of the department’s third Data Book, this year in collaboration with sister agencies to form the first Health and Human Services Data Book. It is a summary of social, economic, and health statistics of our state. The Data Book presents, in one reference document, a diversity of information and is designed to facilitate comparisons of national, state, and county-level data.

NEW MEXICO HEALTH &  
HUMAN SERVICES DATA BOOK

 | Volume 3 2022.1



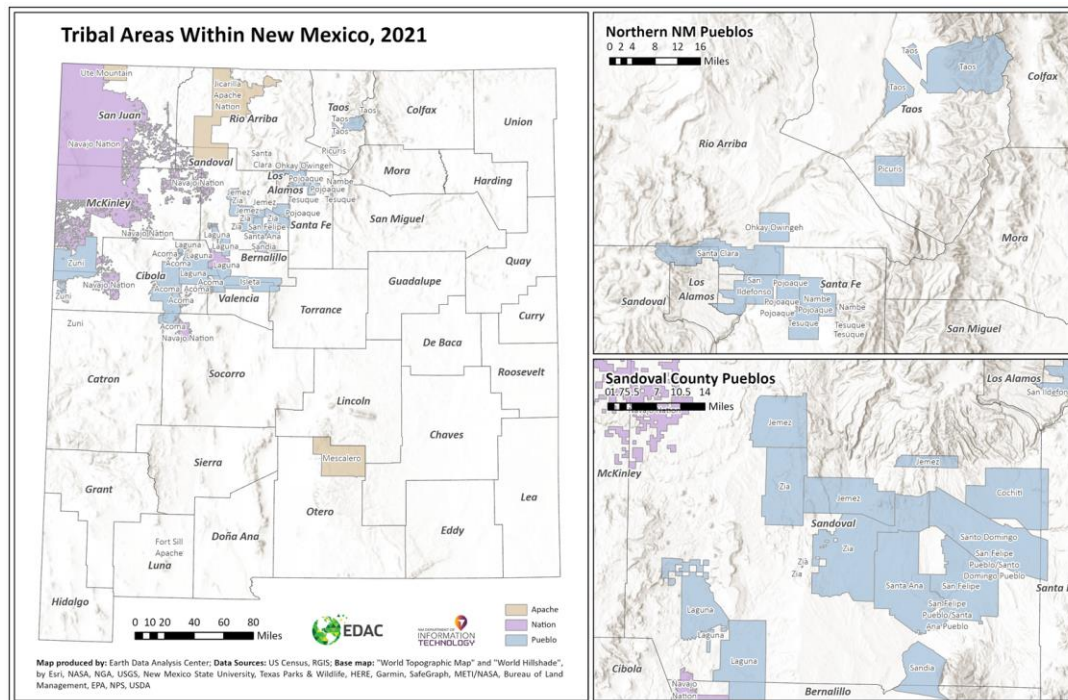
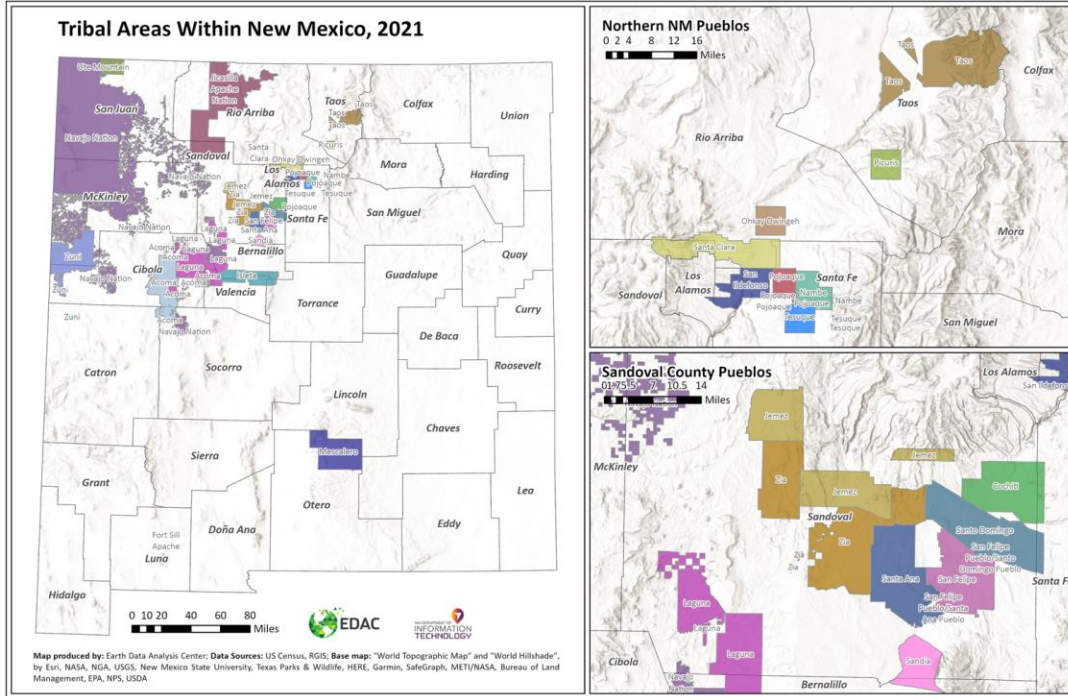
In the book’s Welcome Letter, Cabinet Secretary at the Human Services Department and Acting Cabinet Secretary at the Department of Health, David R. Scrase, M.D said, “the 2022 Data Book is part of the state’s broader strategy for business transformation and for being trusted fiduciaries of taxpayer dollars, striving to leverage federal funding where appropriate to transform the lives of the New Mexicans we serve. We strive to find innovative ways to deliver our benefits and services to our customers and to connect with the communities we serve. Through a variety of programs described herein, we are deeply honored to serve more than half of all New Mexicans.”

Link to the entire book: **Health and Human Services Data Book 2022.1** | [High-Resolution File](#) size 81,501 KB | [Lower-Resolution File](#) size 21,617 KB

The Data Book contains various sections, representing the types of information most frequently requested by a broad range of stakeholders.

**[INTRODUCTION](#)** | File size 3,574 KB

This section includes the State’s Land Acknowledgement and two versions of a new map showing Tribal Lands and county line boundaries in New Mexico. These maps were created in collaboration with the Indian Affairs Department (IAD) and the Department of Information Technology (DoIT).



**AGENCY OVERVIEWS** | File size 1,900 KB

This section provides overviews of the state agencies involved in creation of this book: Aging and Long-Term Services, Children Youth and Families, Department of Health, Early Childhood Education and Care, Human Services, Indian Affairs, and Public Education. Each two-pager includes a summary of divisions and programs, as well as where to go for more information and to apply.

[U.S. & NEW MEXICO DEMOGRAPHIC DATA](#) | File size 13,758 KB

This section provides information and statistics across a range of demographic, health, and socioeconomic indicators. U.S. maps are broken out by state, and New Mexico maps are presented at county-level. A text box on the bottom right of each table provides information important for correct interpretation of the table. In many tables, details will not add exactly to the totals and subtotals shown because of rounding.

[U.S. & NEW MEXICO HEALTH & WELLNESS DATA](#) | File size 23,215 KB

This section provides information and statistics across a range of demographic, health, and socioeconomic indicators. U.S. maps are broken out by state, and New Mexico maps are presented at county-level. A text box on the bottom right of each table provides information important for correct interpretation of the table. In many tables, details will not add exactly to the totals and subtotals shown because of rounding.

[PROGRAMS & SERVICES DATA](#) | File size 24,867 KB

This section illustrates the number of people served by major health and human services agencies as well total program expenditures by county. Additionally, the State of New Mexico recognizes and affirms its government-to-government relationship with its 23 sovereign Pueblos, Nations and Tribal neighbors; and, therefore, has included a series of program enrollment maps among Native Americans.

[COUNTY FACTSHEETS](#) | File size 12,137 KB

This section provides comparable information and statistics across a range of demographic and socioeconomic indicators, as well as information related to the Human Services Department field offices, program enrollment and funding. Also included are details related to local health providers such as nursing facilities, hospitals, Federally Qualified Health Centers, and community resources such as food banks and COVID-19 testing sites.

[REFERENCE](#) | File size 465 KB

This section includes key terms for all data, defines acronyms used in the Data Book, and acknowledges those who contributed to the book's creation.

**We talk, interpret and smile in all languages.** We provide written information to our customers in both English and Spanish and interpretation services are available in 58 languages through our provider, [CTS Language Link](#). For our hearing, and speech impaired customers, we utilize [Relay New Mexico](#), a free 24-hour service that ensures equal communication access via the telephone to individuals who are deaf, hard of hearing, deaf-blind or speech disabled.

The Human Services Department provides services and benefits to 1,051,755 New Mexicans through several programs including: the Medicaid Program, Temporary Assistance for Needy Families (TANF) Program, Supplemental Nutrition Assistance Program (SNAP), Child Support Program, and several Behavioral Health Services.

###



STATE OF NEW MEXICO  
**Michelle Lujan Grisham**, Governor  
**David R. Scrase, M.D.**, Secretary  
Kari Armijo, Deputy Cabinet Secretary  
Angela Medrano, Deputy Cabinet Secretary  
Nicole Comeaux, JD, MPH, Medicaid Director

## NEWS RELEASE

**Contact:** Jodi McGinnis Porter  
jodi.mcginis-porter@state.nm.us

January 11, 2022

### State publishes the 2022 Data Book Volume 3

*Provides national data that compares New Mexico to other states*

SANTA FE – The New Mexico Human Services Department announces the publication of the department’s third Data Book, this year in collaboration with sister agencies to form the first Health and Human Services Data Book. It is a summary of social, economic, and health statistics of our state. The Data Book presents, in one reference document, a diversity of information and is designed to facilitate comparisons of national, state, and county-level data.

NEW MEXICO HEALTH &  
HUMAN SERVICES DATA BOOK



In the book’s Welcome Letter, Cabinet Secretary at the Human Services Department and Acting Cabinet Secretary at the Department of Health, David R. Scrase, M.D said, “the 2022 Data Book is part of the state’s broader strategy for business transformation and for being trusted fiduciaries of taxpayer dollars, striving to leverage federal funding where appropriate to transform the lives of the New Mexicans we serve. We strive to find innovative ways to deliver our benefits and services to our customers and to connect with the communities we serve. Through a variety of programs described herein, we are deeply honored to serve more than half of all New Mexicans.”

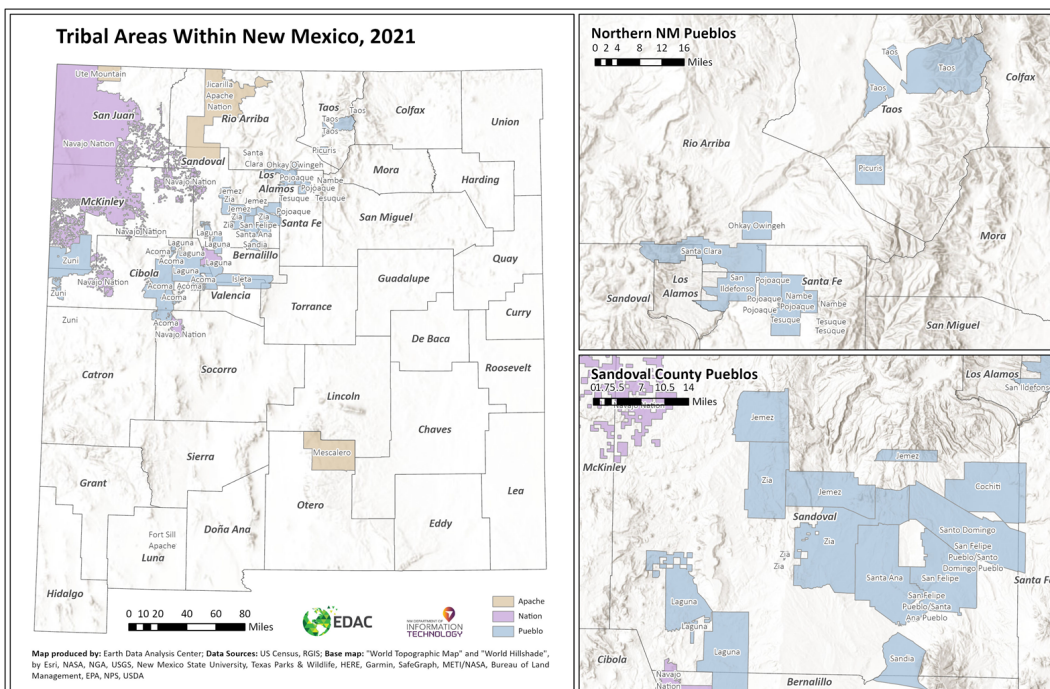
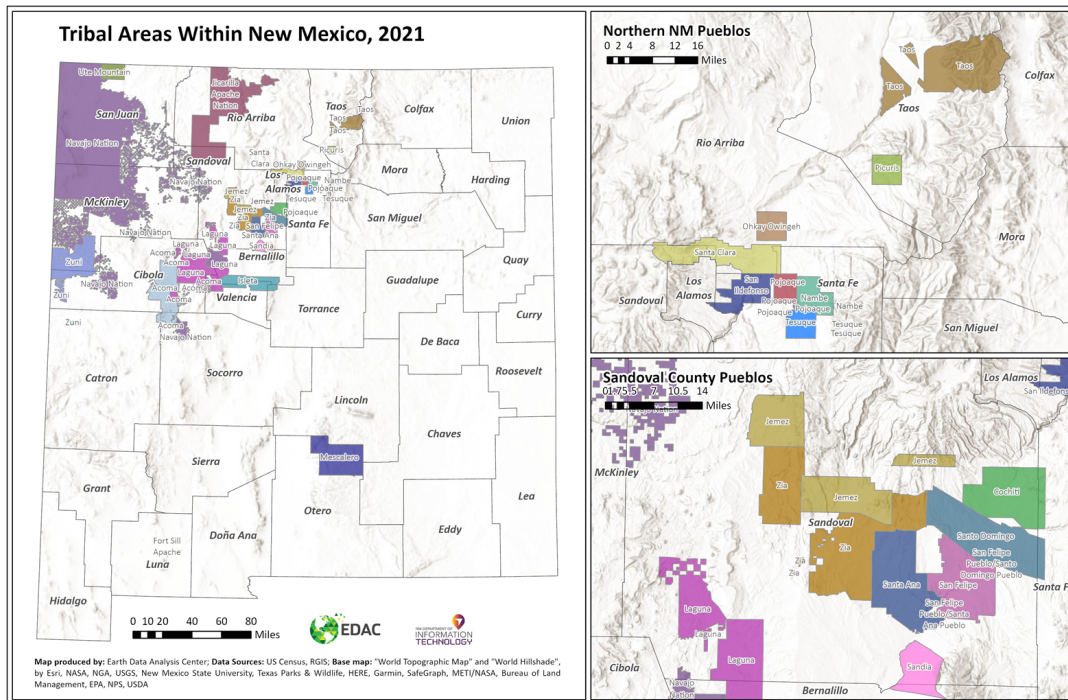


Link to the entire book: **Health and Human Services Data Book 2022.1** | [High-Resolution File](#) size 81,501 KB | [Lower-Resolution File](#) size 21,617 KB

The Data Book contains various sections, representing the types of information most frequently requested by a broad range of stakeholders.

**[INTRODUCTION](#)** | File size 3,574 KB

This section includes the State’s Land Acknowledgement and two versions of a new map showing Tribal Lands and county line boundaries in New Mexico. These maps were created in collaboration with the Indian Affairs Department (IAD) and the Department of Information Technology (DoIT).



**[AGENCY OVERVIEWS](#) | File size 1,900 KB**

This section provides overviews of the state agencies involved in creation of this book: Aging and Long-Term Services, Children Youth and Families, Department of Health, Early Childhood Education and Care, Human Services, Indian Affairs, and Public Education. Each two-pager includes a summary of divisions and programs, as well as where to go for more information and to apply.

**[U.S. & NEW MEXICO DEMOGRAPHIC DATA](#) | File size 13,758 KB**

This section provides information and statistics across a range of demographic, health, and socioeconomic indicators. U.S. maps are broken out by state, and New Mexico maps are presented at county-level. A text box

on the bottom right of each table provides information important for correct interpretation of the table. In many tables, details will not add exactly to the totals and subtotals shown because of rounding.

[U.S. & NEW MEXICO HEALTH & WELLNESS DATA](#) | File size 23,215 KB

This section provides information and statistics across a range of demographic, health, and socioeconomic indicators. U.S. maps are broken out by state, and New Mexico maps are presented at county-level. A text box on the bottom right of each table provides information important for correct interpretation of the table. In many tables, details will not add exactly to the totals and subtotals shown because of rounding.

[PROGRAMS & SERVICES DATA](#) | File size 24,867 KB

This section illustrates the number of people served by major health and human services agencies as well total program expenditures by county. Additionally, the State of New Mexico recognizes and affirms its government-to-government relationship with its 23 sovereign Pueblos, Nations and Tribal neighbors; and, therefore, has included a series of program enrollment maps among Native Americans.

[COUNTY FACTSHEETS](#) | File size 12,137 KB

This section provides comparable information and statistics across a range of demographic and socioeconomic indicators, as well as information related to the Human Services Department field offices, program enrollment and funding. Also included are details related to local health providers such as nursing facilities, hospitals, Federally Qualified Health Centers, and community resources such as food banks and COVID-19 testing sites.

[REFERENCE](#) | File size 465 KB

This section includes key terms for all data, defines acronyms used in the Data Book, and acknowledges those who contributed to the book's creation.

**We talk, interpret and smile in all languages.** We provide written information to our customers in both English and Spanish and interpretation services are available in 58 languages through our provider, [CTS Language Link](#). For our hearing, and speech impaired customers, we utilize [Relay New Mexico](#), a free 24-hour service that ensures equal communication access via the telephone to individuals who are deaf, hard of hearing, deaf-blind or speech disabled.

The Human Services Department provides services and benefits to 1,051,755 New Mexicans through several programs including: the Medicaid Program, Temporary Assistance for Needy Families (TANF) Program, Supplemental Nutrition Assistance Program (SNAP), Child Support Program, and several Behavioral Health Services.

###