

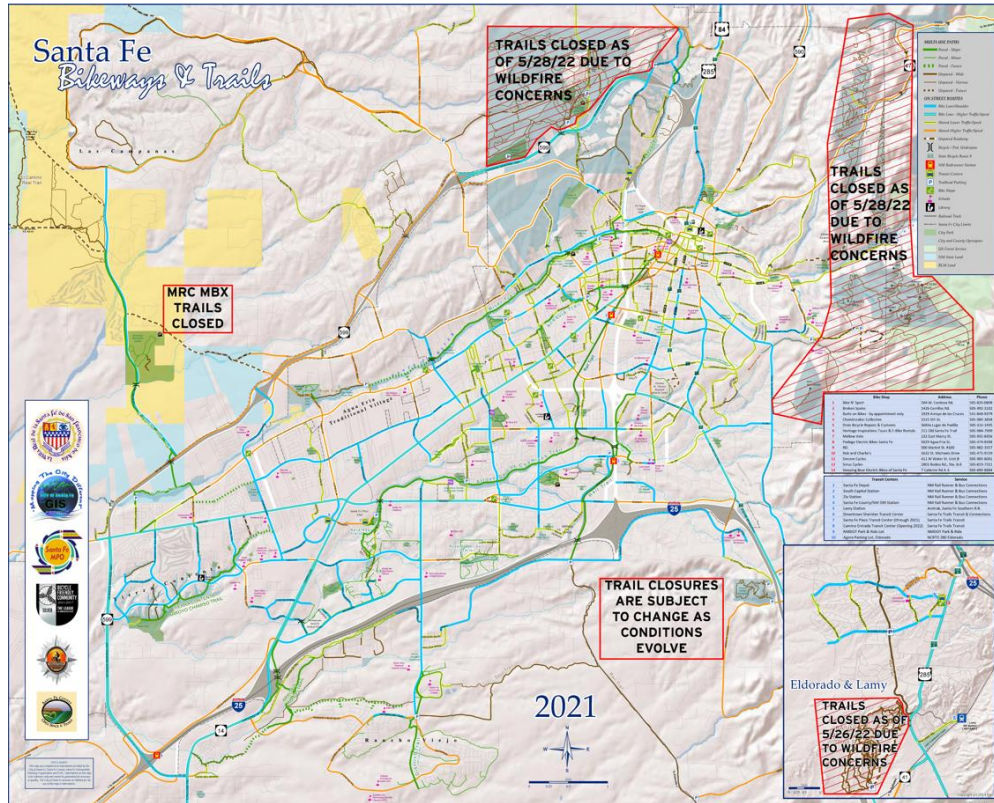


Trail Closures Extended Through June 7, 2022

Precautions Needed as Extreme Fire Conditions Persist

SANTA FE, May 31, 2022 — During an emergency meeting on Tuesday morning, the Governing Body voted to [extend the trail closures](#) that went into effect on Saturday, May 28 through June 7, 2022. The extreme fire conditions that prompted the initial closures persist, as does the danger of range fires, grass fires, forest fires, and structure fires in and around the city of Santa Fe. Residents are urged to abide by the closures and to utilize the City's robust network of inner-city trails, open spaces, parks, and recreation centers that remain open.

*Map of open and closed trails, open spaces,
and parks in Santa Fe*



[Download a PDF](#)

For more information about activities and recreation options at the City of Santa Fe's recreation facilities, visit their websites:

[Genoveva Chavez Community Center](#)

[Fort Marcy Recreation Complex](#)

[Salvador Perez Recreation Center](#)

Residents can also utilize the [Marty Sanchez Links de Santa Fe](#), or find a host of [fun activities and events for kids and adults organized by the Santa Fe Public Library](#). *Programming is available at all three branches.*

Per the extension of the emergency orders, the following trails and trails systems will remain closed:

- The Dale Ball Trails (which are accessed off of Hyde Park Road, Cerro Gordo Road, Upper Canyon Road, and Camino Cruz Blanca, including the Atalaya and Dorothy Stewart trails);
- The Sun Mountain Trail;
- La Tierra Trails;
- MX/BMX trails at La Tierra and the Metropolitan Recreation Complex (MRC)

While the existing fires do not put the city of Santa Fe at immediate risk, new fires can be easily started in the city's vegetated open spaces through irresponsible human use, such as discarded cigarettes, sparks from vehicles and machinery, and behavior or actions that could cause a fire incident to break out.

To prevent fires, the City is also under Fire Restrictions that were implemented in March. The following are prohibited within city limits while the restrictions are in place:

- Smoking in public parks, recreation areas, or on any public trail;
- Using charcoal barbecue grills in public parks and recreation areas;
- The sale or use of some fireworks within the city of Santa Fe
- Open burning, including campfires, bonfires, pit barbecues;
- Burning of weeds, trash, or other vegetation;
- Using any motorized all-terrain vehicle or motorcycles on city owned open space, parks, trails, or other recreational areas

[Click here for more information about the fire restrictions and resources for preparing for a wildfire emergency.](#)



[Share This Email](#)



[Share This Email](#)



[Share This Email](#)