



## Join Team Santa Fe: Rapid Hiring Event for Environmental Services and Wastewater Divisions

***Friday, May 19, and Saturday, May 20, at 1142 Siler Road***

The Environmental Services Division (ESD) and Wastewater Division are holding a Rapid Hiring Event on Friday, May 19, from 10 a.m. to 3 p.m., and Saturday, May 20, from 9 a.m. to 12 p.m., at [1142 Siler Road](#) in Santa Fe.

Human Resources and ESD/Wastewater Management staff will be on-site to screen applications and conduct on-the-spot interviews. Computers will also be available for use in submitting applications.

Interested applicants are encouraged to apply online in advance by visiting [www.santafem.gov/jobs](http://www.santafem.gov/jobs). After applying online, applicants can get prescreened and go directly to the line for interviews at the Rapid Hiring Event if they qualify for the position.

Applicants should bring the following to the event: resume, photo identification, and proof of education. (Proof of education documents can also be submitted after the event if a job offer is made).

### **Open Positions Include:**

- **Environmental Services Division:**
  - Collections Equipment Operators
- **Wastewater Division:**
  - Field Operator (Entry, Basic, & Lead)
  - Waste Operator (Basic & Advanced)
  - Journeyman Electrician
  - Laborer

*When applying for an Operator position, applicants do not need a Commercial Driver License (CDL) to apply. The City will train new operators and help them apply for the license.*

# RAPID HIRING EVENT

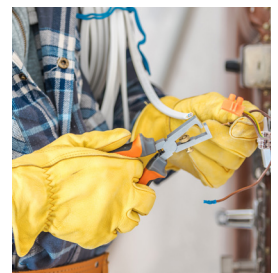
Friday, May 19  
10AM - 3PM

Saturday, May 20  
9AM - 12PM

[1142 Siler Road Santa Fe, NM, 87507](#)



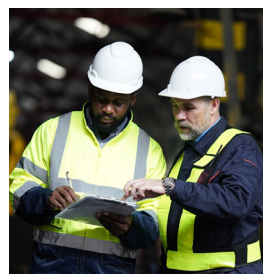
Human Resources and ESD/Wastewater Management staff will be on-site to screen applications and conduct interviews.



**Open Positions Include:**

**Environmental Services Division:**  
Collections Equipment Operators

**Wastewater Division:**  
Field Operator (Entry, Basic, & Lead)  
Waste Operator (Basic & Advanced)  
Journeyman Electrician, Laborer



## What To Bring:

Resume, photo ID, and proof of education.  
No CDL required to apply for Operator positions!  
Training is provided upon employment.

For more info on City of Santa Fe jobs and how to apply, visit [santafenm.gov/jobs](http://santafenm.gov/jobs) or scan the QR code:



**CITY OF SANTA FE**

[santafenm.gov](http://santafenm.gov)